

2803/105

CLOTHING CONSTRUCTION I

PRACTICAL

June/July 2019

Time: 6 hours



THE KENYA NATIONAL EXAMINATIONS COUNCIL

DIPLOMA IN FASHION DESIGN AND CLOTHING TECHNOLOGY

MODULE I

CLOTHING CONSTRUCTION I  
PRACTICAL

6 hours

INSTRUCTIONS TO CANDIDATES

1. You should have the following items for this examination:
  - (i) plain light weight fabric  $1\frac{3}{4}$  metres long by 114 cm wide;
  - (ii) elastic  $\frac{1}{2}$  metre long by  $1\frac{1}{2}$  wide;
  - (iii) thread to match the fabric;
  - (iv) brown papers;
  - (v) one large envelope;
  - (vi) sewing tools.
  
2. At the end of the examination:
  - (a) stitch on a label bearing your name and index number on a single layer of fabric without concealing any details;
  - (b) enclose the garment in the large envelope provided.

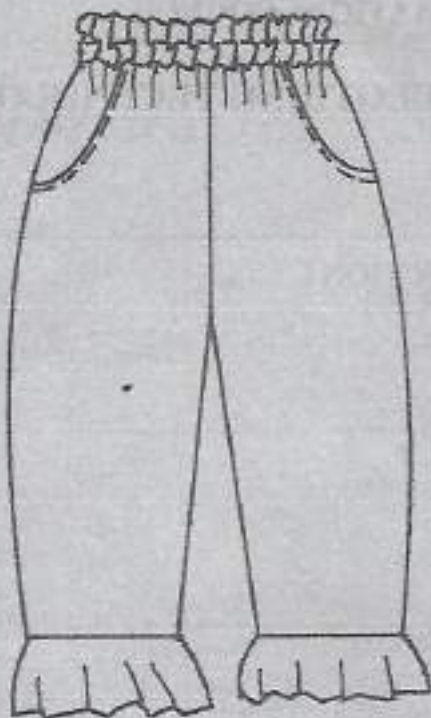
This paper consists of 2 printed pages.

Candidates should check the question paper to ascertain that both pages are printed as indicated and that no questions are missing.

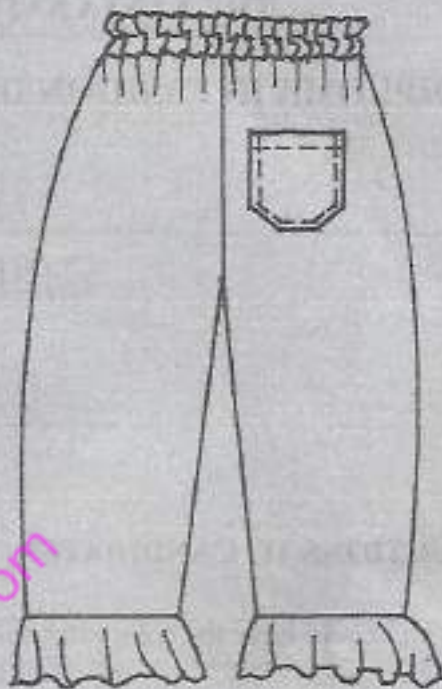
## TASKS

Using the measurements and the materials provided, cut out and make the trouser style sketched below as follows:

- use the French seam at the sides;
- use plain open seams at the forks and inside legs.



FRONT VIEW



BACK VIEW

## MEASUREMENTS

Waist	-	68 cm	68
Hips	-	94 cm	94
Waist to hip	-	20.6 cm	20.6
Full length	-	84 cm	84
Body rise	-	28 cm	28
Trouser bottom	-	22 cm	22
Flounce height	-	9 cm	9

THIS IS THE LAST PRINTED PAGE.