

IS01/102
ART, FASHION DESIGN AND SKETCHING
AND PATTERN DRAFTING I
June/July 2016
Time: 4 hours



THE KENYA NATIONAL EXAMINATIONS COUNCIL

TECHNICAL, INDUSTRIAL, VOCATIONAL AND ENTREPRENEURSHIP
TRAINING

CRAFT CERTIFICATE IN FASHION DESIGN AND GARMENT MAKING
TECHNOLOGY

MODULE I

ART, FASHION DESIGN AND SKETCHING AND PATTERN DRAFTING I

4 hours

INSTRUCTIONS TO CANDIDATES

*This paper consists of TWO sections; A and B.
Answer TWO questions from section A in the answer booklet provided.
Attempt ALL the questions in section B using the materials provided.
You should have the following items for the examination:*

- (i) answer booklet;
- (ii) sheets of photocopying paper;
- (iii) $\frac{1}{4}$ scale ruler or square;
- (iv) a pair of paper scissors;
- (v) 30 cm ruler;
- (vi) rubber/ eraser;
- (vii) 2 H and HB pencil;
- (viii) tracing wheel;
- (ix) french curves;
- (x) tape measure;
- (xi) glue/ cello tape.



This paper consists of 6 printed pages

Candidates should check the question paper to ascertain that all the pages are printed as indicated and that no questions are missing.

SECTION A: ART AND FASHION DESIGN (40 marks)

Answer any TWO questions from this section.

Give innovative way of seeing things and tangible form to the sketches
Give tangible forms of feeling
Give tangible forms of feelings

1. (a) Outline four roles of art and design to a fashion designer. (4 marks)
- (b) Sketch two variations of each of the following design features:
- (i) flared sleeve;  (4 marks)
 - (ii) neck tie. (4 marks)
- (c) Sketch the front view of an anorak to show the following details:
- (i) kangaroo pocket;
 - (ii) hood; 
 - (iii) zip in a slit;
 - (iv) elastic;
 - (v) draw string. (8 marks)

2. (a) Sketch the front view of a man's bathrobe to show the following details:
- (i) roll collar;
 - (ii) raglan sleeve;
 - (iii) patch pocket;
 - (iv) belt;
 - (v) darts. (8 marks)
- (b) Highlight five materials used in stencil making. (5 marks)
- (c) Explain the following techniques:
- (i) shading; (2 marks)
 - (ii) tinting. (2 marks)
- (d) Outline three qualities of a well designed garment. (3 marks)
3. (a) Sketch three variations of yokes. ^{hip}_{worst}
back (6 marks)
- (b) Sketch two skirts to show the use of stripes for a short plump girl. (8 marks)
- (c) Outline the steps in developing a mural painting. (6 marks)

SECTION B: PATTERN DRAFTING I (60 marks)

Answer ALL the questions from this section.

TASKS

1. Using the measurements provided, draft the close fitting jeans block.

Measurements in cm:

| | |
|--------------------|-----|
| Seat | 102 |
| Body rise | 28 |
| Jeans bottom width | 22 |
| Inside leg | 81 |
| Trouser waist | 86 |

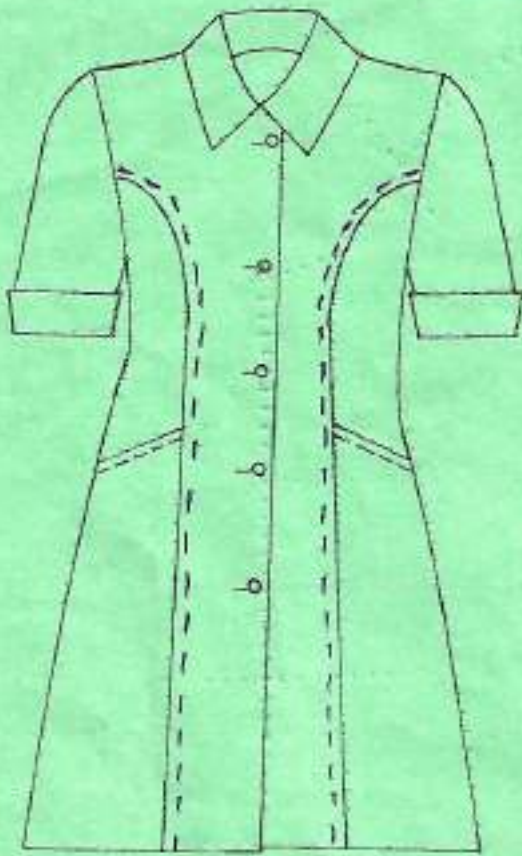
2. Trace out the dress and sleeve blocks provided and develop final patterns for the dress style sketched below.

All stages of development must be shown.

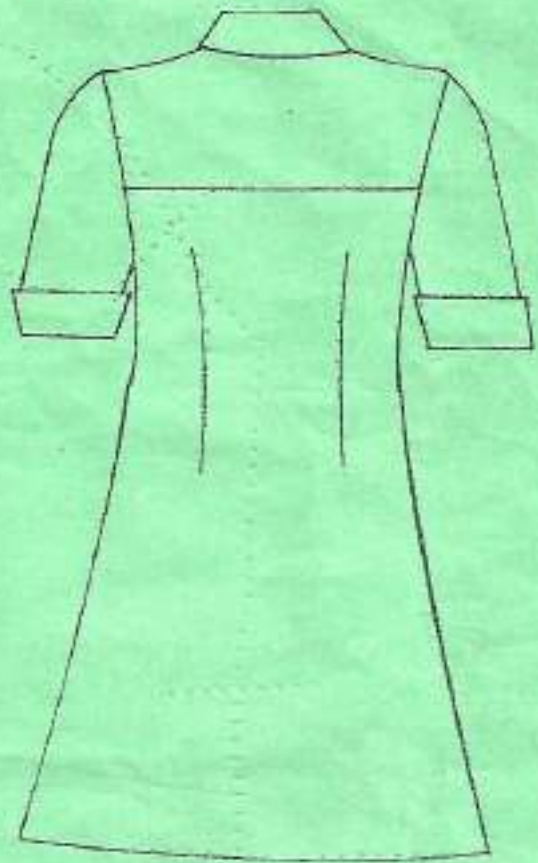
NB: Omit seam and hem allowances.

- Develop an extended sleeve turn-up

easytv.com



FRONT VIEW



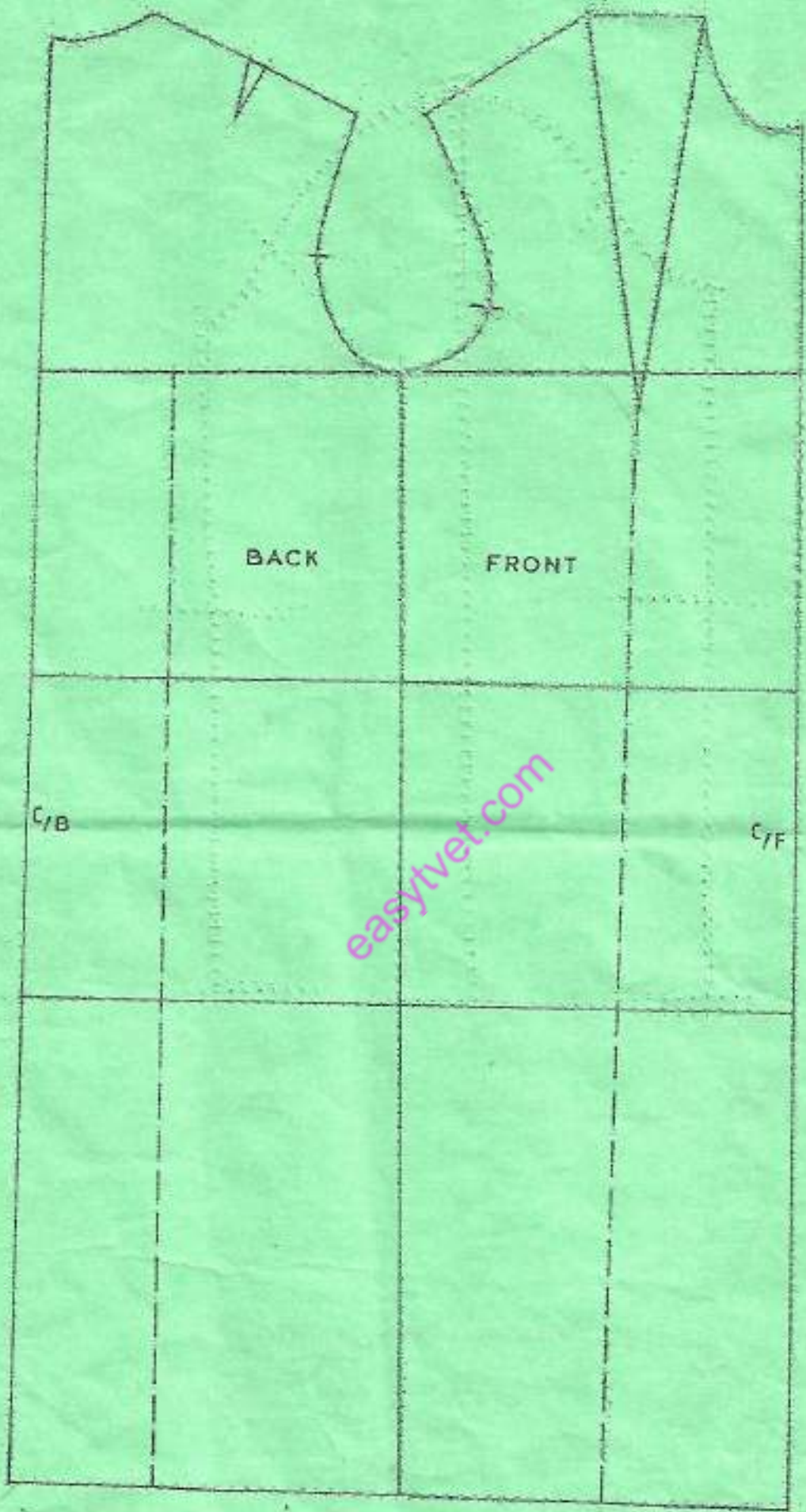
BACK VIEW

MEASUREMENTS
 Round arm = 11.5 cm
 Sleeve length = 12 cm
 Pocket bag depth = 8 cm
 Turn up depth = 2.5 cm

Full length = 56 cm
 Nape to Waist = 24.2 cm
 Waist - hip = 12.3 cm
 SKL = 34 cm

Using the bodice & sleeve blocks and the measurements provided, produce final pattern pieces required for the dress style above.

- N.B. Use french seams at the shoulder
 2) Use plain closed seam at the panels and side seams
 3) Make one button hole at the neckline.





THIS IS THE LAST PRINTED PAGE.