

2803/105
CLOTHING CONSTRUCTION I
PRACTICAL
June/July 2017
Time: 6 hours



THE KENYA NATIONAL EXAMINATIONS COUNCIL

**DIPLOMA IN FASHION DESIGN AND CLOTHING TECHNOLOGY
MODULE I**

CLOTHING CONSTRUCTION I PRACTICAL

6 hours

INSTRUCTIONS TO CANDIDATES

1. You should have the following items for this examination:
 - (i) plain medium weight fabric $\frac{3}{4}$ metres long by 152 cm wide;
 - (ii) adhesive interfacing 36 cm by 36 cm;
 - (iii) elastic 1 $\frac{1}{4}$ " wide by $\frac{1}{4}$ metre long;
 - (iv) thread to match the fabric;
 - (v) sewing tools;
 - (vi) brown papers;
 - (vii) one large envelope.
2. Study the sketches carefully before beginning the test.
3. At the end of the examination:-
 - (a) stitch on a label bearing your name and index number on a single layer of fabric without concealing any details.
 - (b) enclose the garment in the large provided.

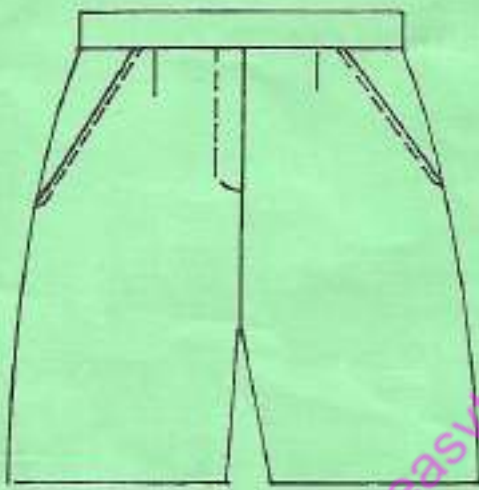
This paper consists of 2 printed pages.

Candidates should check the question paper to ascertain that both pages are printed as indicated and that no questions are missing.

TASKS

Using the measurements and materials provided, cut out and make the pair of shorts style sketched below as follows:

- use plain closed seams at the forks and sides;
- use the plain open seam at the inside legs;
- top stitch the side seam;
- fix the yoke with the overlaid seam;
- slip hem the garment.



FRONT VIEW



BACK VIEW

MEASUREMENTS

Hip	-	70 cm
Waist	-	64 cm
Body rise	-	21 cm
Waist to hip	-	15 cm
Full length	-	60 cm

$$\begin{array}{r} 17 \\ 4 \\ \hline 21 \\ 48 \\ \hline 24 \end{array} \quad 16$$

Waist to hip

THIS IS THE LAST PRINTED PAGE.