

2803/105
CLOTHING CONSTRUCTION I
PRACTICAL
March/April 2020
Time: 6 hours

HOD CLOTHING AND TEXTILE
RAMOGI INSTITUTE OF ADVANCED TECHNOLOGY
P. O. BOX 1738 - 40100, KISUMU
DATE:



THE KENYA NATIONAL EXAMINATIONS COUNCIL

DIPLOMA IN FASHION DESIGN AND CLOTHING TECHNOLOGY
MODULE I

CLOTHING CONSTRUCTION I PRACTICAL

6 hours

INSTRUCTIONS TO CANDIDATES

1. You should have the following items for this examination:
 - (i) plain medium weight fabric $1\frac{1}{4}$ metres long by 152 cm wide;
 - (ii) fusible interfacing 55 cm by 30 cm;
 - (iii) thread to match the fabric;
 - (iv) one button 1.5 cm diameter without a shank;
 - (v) brown papers;
 - (vi) sewing tools;
 - (vii) one large envelope.

2. At the end of the examination:
 - (a) stitch on a label bearing your name and index number on a single layer of fabric without concealing any details.
 - (b) enclose the garment in the large envelope provided.

This paper consists of 2 printed pages.

Candidates should check the question paper to ascertain that both pages are printed as indicated and that no questions are missing.

TASKS

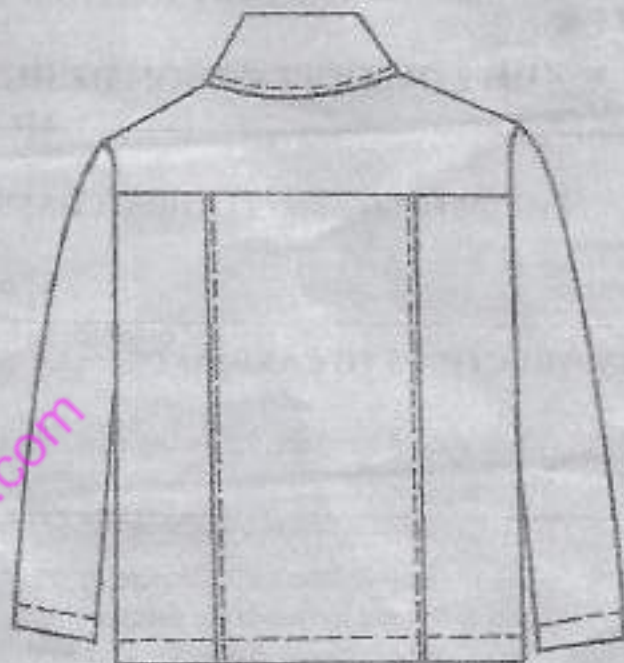
Using the measurements and the materials provided, cut out and make the jacket style sketched below as follows:

- (i) use double stitched seams at the shoulders, sides and underarms;
- (ii) make a buttonhole at the top of the opening and sew on the button;
- (iii) understitch the front facings.

NB: single yokes.



FRONT VIEW



BACK VIEW

MEASUREMENTS

Chest	✓	-	79 cm	- 19.75 cm
Across back	✓	-	32.4 cm	- 10.2 cm
Neck size	✓	-	34 cm	- 11 cm
Shoulder	✓	-	11.8 cm	- 5.9 cm
Wrist	✓	-	15.8 cm	-
Sleeve depth	✓	-	19.2 cm	-
Back neck to waist	✓	-	35.8 cm	-
Sleeve length	✓	-	47 cm	-
Full length	✓	-	49 cm	-

Ren. Pocket
collar
4"

4.210
10.8
31.2

THIS IS THE LAST PRINTED PAGE.