

2803/105

**CLOTHING CONSTRUCTION I  
PRACTICAL**

Oct./Nov. 2017

Time: 6 hours



**THE KENYA NATIONAL EXAMINATIONS COUNCIL**

**DIPLOMA IN FASHION DESIGN AND CLOTHING TECHNOLOGY**

**MODULE I**

**CLOTHING CONSTRUCTION I PRACTICAL**

**6 hours**

**INSTRUCTIONS TO CANDIDATES**

1. You should have the following for this examination:

- (i) plain medium weight fabric 1 metre long by 152 cm wide;
- (ii) fusible interfacing 78 cm by 11 cm;
- (iii) sewing thread to match the fabric;
- (iv) one button 1.5 cm wide without a shank;
- (v) brown papers;
- (vi) one large envelope;
- (vii) zip 18 cm (7") long;
- (viii) sewing tools.

At the end of the examination, stitch on a label bearing your name and index number on a single layer of fabric without concealing any details and enclose the garment in the large envelope provided.

**This paper consists of 2 printed pages**

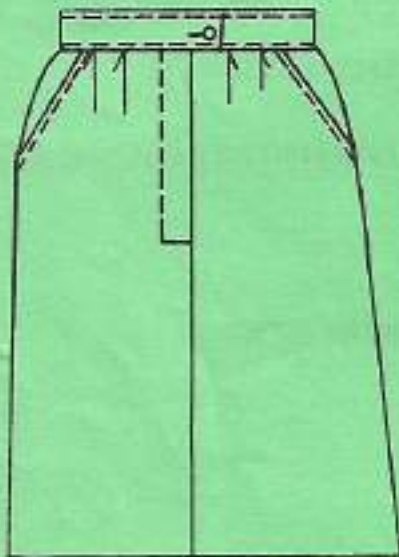
**Candidates should check the question paper to ascertain that both pages are printed as indicated and that no questions are missing.**

Full skirt length —

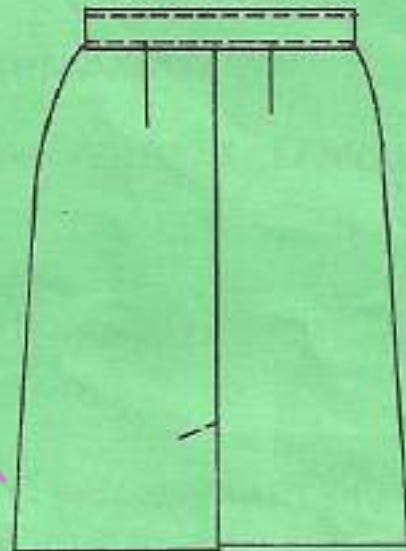
### TASKS

Using the materials and the measurements provided, cut out and make the skirt style sketched below as follows:

- (i) use double stitched seams at the sides;
- (ii) make **one** hand worked buttonhole and sew on the button;
- (iii) hand hem the garment.



FRONT VIEW



BACK VIEW

### MEASUREMENTS

Waist	=	68 cm	
Hips	=	92 cm	
Waist to hip	=	20.3 cm	- 20.3
Full length	=	60 cm	$\frac{60}{42}$
Waistband depth	=	4 cm	
Pleat depth	=	2 cm	

easytv.com

2.1  
42  
68  
4  
12  
- 20.3  
60  
42

$\frac{20}{3}$

THIS IS THE LAST PRINTED PAGE.

5 6  $\frac{6.6}{3}$   
3 7 0  
20