

2803/105
CLOTHING CONSTRUCTION I
PRACTICAL
Oct./Nov. 2018
Time: 6 hours



THE KENYA NATIONAL EXAMINATIONS COUNCIL

DIPLOMA IN FASHION DESIGN AND CLOTHING TECHNOLOGY

MODULE I

CLOTHING CONSTRUCTION I PRACTICAL

6 hours

INSTRUCTIONS TO CANDIDATES

1. You should have the following for this examination:
 - (i) plain light weight fabric $6\frac{1}{4}$ metres long by 114 cm wide;
 - (ii) fusible interfacing 40 cm by 52 cm;
 - (iii) thread to match the fabric;
 - (iv) brown papers;
 - (v) one large envelope;
 - (vi) one button 1.5 cm diameter without a shank;
 - (vii) sewing tools.

2. At the end of the examination:
 - (a) stitch on a label bearing your name and index number on a single layer of fabric without concealing any details.
 - (b) enclose the garment in the large envelope provided.

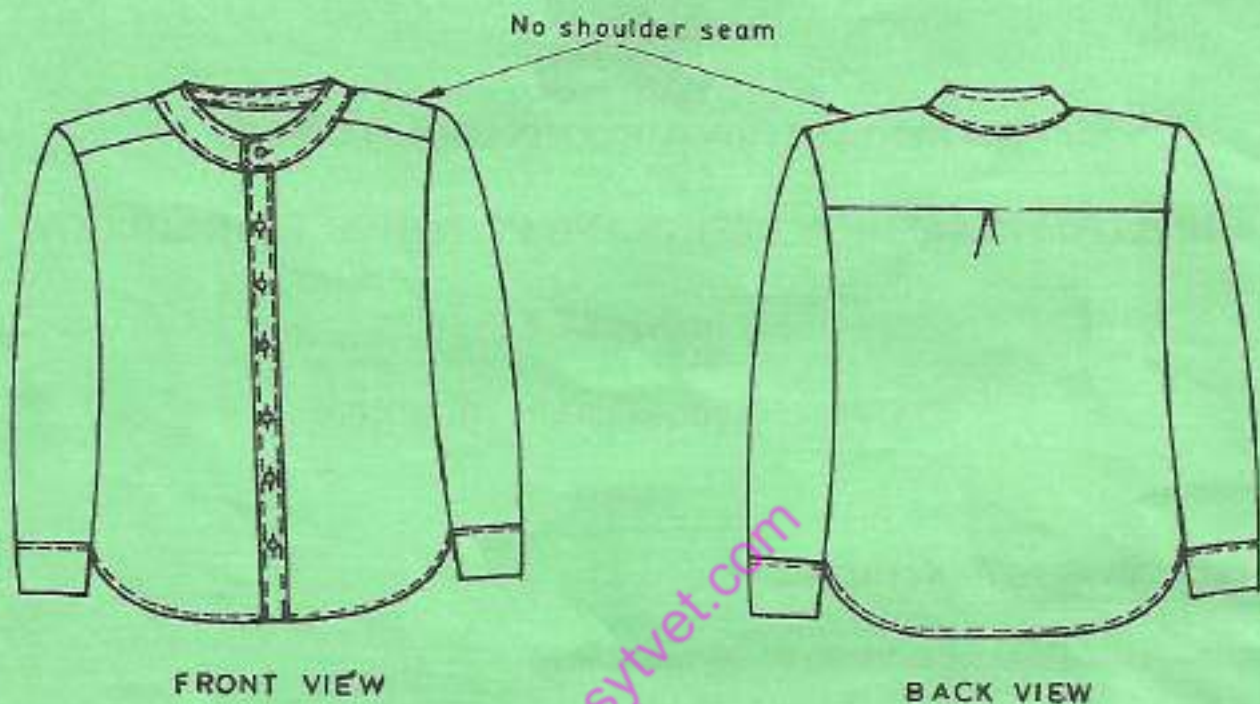
This paper consists of 2 printed pages.

Candidates should check the question paper to ascertain that both pages are printed as indicated and that no questions are missing.

TASKS

Using the measurements and the materials provided, cut out and make the shirt style sketched below as follows:

- (i) use the double stitched seam at the underarms and the sides;
- (ii) make one handworked buttonhole at the collar and sew on the button.



MEASUREMENTS

| | | |
|--------------------|---|---------|
| Chest | - | 79 cm |
| Across back | - | 32.8 cm |
| Seat | - | 82 cm |
| Neck size | - | 34 cm |
| Shoulder | - | 12 cm |
| wrist | - | 24 cm |
| Seye depth | - | 19.6 cm |
| Back neck to waist | - | 36.4 cm |
| Turn-up depth | - | 5 cm |
| Full length | - | 49 cm |
| Sleeve length | - | 48 cm |

THIS IS THE LAST PRINTED PAGE.