

2803/105
CLOTHING CONSTRUCTION I
PRACTICAL
Oct/Nov. 2019
Time: 6 hours



THE KENYA NATIONAL EXAMINATIONS COUNCIL

**DIPLOMA IN FASHION DESIGN AND CLOTHING TECHNOLOGY
MODULE I**

CLOTHING CONSTRUCTION I PRACTICAL

6 hours

INSTRUCTIONS TO CANDIDATES

1. You should have the following items for this examination:
 - (i) plain light weight fabric $1\frac{1}{4}$ metres long by 152 cm wide;
 - (ii) fusible interfacing 64 cm by 46 cm;
 - (iii) thread to match the fabric;
 - (iv) zip 10" long;
 - (v) brown papers;
 - (vi) sewing tools;
 - (vii) one large envelope.

2. At the end of the examination:
 - (a) stitch on a label bearing your name and index number on a single layer of fabric without concealing any details.
 - (b) enclose the garment in the large envelope provided.

This paper consists of 2 printed pages.

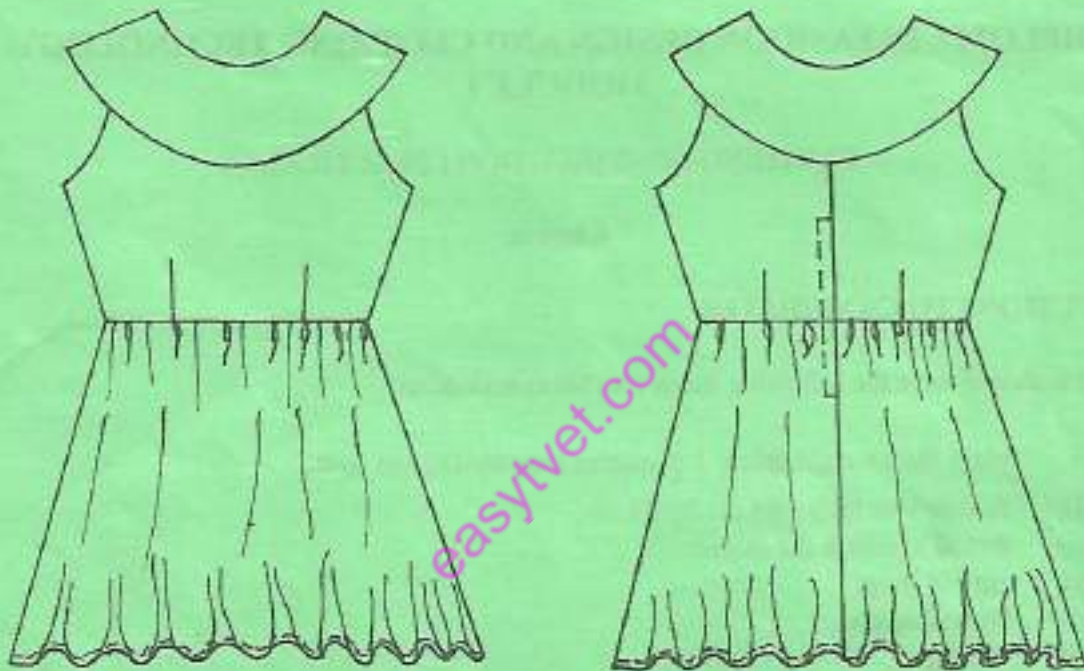
Candidates should check the question paper to ascertain that both pages are printed as indicated and that no questions are missing.

TASKS

Using the measurements and the materials provided, cut out and make the garment style sketched below as follows:

- (i) use the plain closed seam at the shoulders and sides;
- (ii) understitch the armhole facings;
- (iii) finish the neckline with a crossway strip.

NB: collar has shoulder seams.



FRONT VIEW

BACK VIEW

MEASUREMENTS

Bust	-	68 cm
Waist	-	61 cm
Shoulder	-	11 cm
Scye depth	-	17.4 cm
Nape to waist	-	32.5 cm
Full length	-	76 cm
Across back	-	29.6 cm

THIS IS THE LAST PRINTED PAGE.