

2528/105
2922/105
HUMAN ECOLOGY AND ECONOMICS
June/July 2017
Time: 3 hours



THE KENYA NATIONAL EXAMINATIONS COUNCIL

DIPLOMA IN ENVIRONMENTAL SCIENCE AND TECHNOLOGY

MODULE I

HUMAN ECOLOGY AND ECONOMICS

3 hours

INSTRUCTIONS TO CANDIDATES

You should have the following for this examination:

answer booklet;

non-programmable scientific calculator.

This paper consists of TWO sections; A and B.

Answer ALL questions in section A and any THREE questions from section B in the answer booklet provided.

Each question in section A carries 4 marks while each question in section B carries 20 marks.

Maximum marks for each part of a question are as shown.

Candidates should answer the questions in English.

This paper consists of 4 printed pages.

Candidates should check the question paper to ascertain that all the pages are printed as indicated and that no questions are missing.

SECTION A (60 marks)

Answer ALL questions from this section.

- State any four traditional social values that are embraced by all cultures in Kenya. (4 marks)
- Define the following terms:
 - (a) urbanization; - *movement of ppl from rural to urban* (2 marks)
 - (b) industrialization. - *conversion where country moves from manufacturing to producing* (2 marks)
- Distinguish between "I" and "me" aspects of self in relation to symbolic interaction theory (4 marks)
- Use a pyramid to arrange the following Maslow hierarchy of needs in order of prepotency principle:
 - (i) self actualization; *(v)*
 - (ii) security; *(iv)*
 - (iii) survival; *(iii)*
 - (iv) esteem; *(ii)*
 - (v) social belonging; *(i)*

*5 - Actualize
4 - esteem
3 - love
2 - security
1 - Physiological*
- Figure 1 shows change in price (P) with quantity (Q) demanded for a given commodity. (4 marks)

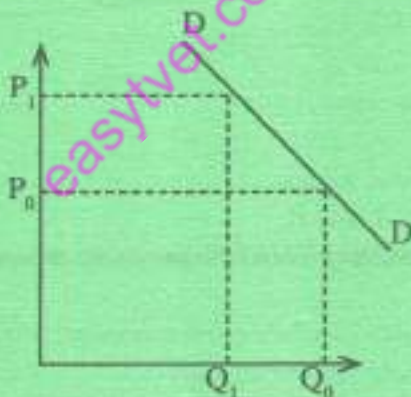


Figure 1

Assuming that $P_1 = \text{Ksh.}100$, $P_0 = \text{Ksh.}50$, $Q_1 = 150$ units and $Q_0 = 200$ units, calculate the price elasticity of demand (PED).

- State any four factors that influence the supply of maize in the market. (4 marks)
 - market condition*
 - technology*
 - transport*
 - weather*
 - cost of production*
 - price*
- Suppose the customer price index for the years 2010, 2011 and 2012 were 123%, 125% and 128% respectively.
 - (a) Calculate the rate of inflation. (3 marks)



- (b) State the trend of the result in (a) above. (1 mark)
8. State any **four** advantages of investing in a public limited company. (4 marks)
9. Explain any **two** motives that make people to hold money. *Emergency bank use.* (4 marks)
10. State any **four** factors that may improve the national income of Kenya. (4 marks)

SECTION B (60 marks)

Answer any **THREE** questions from this section.



11. (a) Define the term national income. (2 marks)
- (b) Use a diagram to explain the income flows between firms and households in a two sector economy. (8 marks)
- (c) Explain any **five** ways that the government of Kenya can use to redeem her public debts. (10 marks)
12. *Hyper moderate.* (a) Explain any **two** types of inflation experienced in Kenya. (4 marks)
- (b) Explain any **four** positive effects of inflation in an economy. (8 marks)
- (c) Distinguish between the following costs of production in a wheat flour producing factory:
- (i) direct costs and indirect costs; (4 marks)
- (ii) average costs and marginal costs. (4 marks)
13. (a) Explain any **five** factors for the existence of small enterprises in Kenya despite the hostile business environment. (10 marks)
- (b) (i) Use the demand schedule shown in Table 1 to draw a demand curve for potatoes. (7 marks)

Table 1

Prices of potatoes (Ksh. per kg).	Quantity of potatoes demanded (kg per month).
34	190
36	180
38	170
40	160
42	150
44	140
46	130



(ii) State **three** exceptions to the Law of Demand. (3 marks)

✓ (a) Explain any **five** benefits of settlement schemes to the economy of Kenya. (10 marks)

*land utilization
employment
growth of net
income*

(b) Explain the following terms in relation to community development:

(i) biotic; - (5 marks)

(ii) symbiosis. - *each member dependent of the other* (5 marks)

✗ (a) Explain the **two** ways of social-cultural and stratification diversity within a society. (10 marks)

(b) (i) Define the term stigma. - *stare where one is discriminated or let upon from the rest* (2 marks)

(ii) Explain the following common types of stigma associated with the youth in the world today:

I character blemishes; (4 marks)

II tribal stigma. (4 marks)

easyvet.com

THIS IS THE LAST PRINTED PAGE.

