

1801/203

**GARMENT MAKING PRACTICAL
FOR WOMEN
Oct./Nov. 2018
Time: 7 Hours**



THE KENYA NATIONAL EXAMINATIONS COUNCIL

**CRAFT CERTIFICATE IN FASHION DESIGN AND GARMENT MAKING
TECHNOLOGY
MODULE II**

GARMENT MAKING PRACTICAL FOR WOMEN

7 hours

INSTRUCTIONS TO CANDIDATES

1. You should have the following for this examination:
 - (a) Bodice, sleeve and skirt blocks size 8 in full scale;
 - (b) plain light weight fabric 2 metres long by 114 cm wide;
 - (c) sewing thread to match the fabric;
 - (d) zip 20" long;
 - (e) brown papers;
 - (f) sewing tools;
 - (g) lace $\frac{1}{2}$ " wide by 1 m long;
 - (h) one large envelope.

2. At the end of the examination,
 - (a) Stitch a label bearing your name and index number on a single layer of fabric, without concealing any details.
 - (b) Enclose the garment inside the envelope.

This paper consists of 3 printed pages.

**Candidates should check the question paper to ascertain that
all the pages are printed as indicated and that no questions are missing.**

TASK

1. Using the bodice, sleeve and skirt blocks and the measurements provided, produce final patterns for the garment style sketched below.

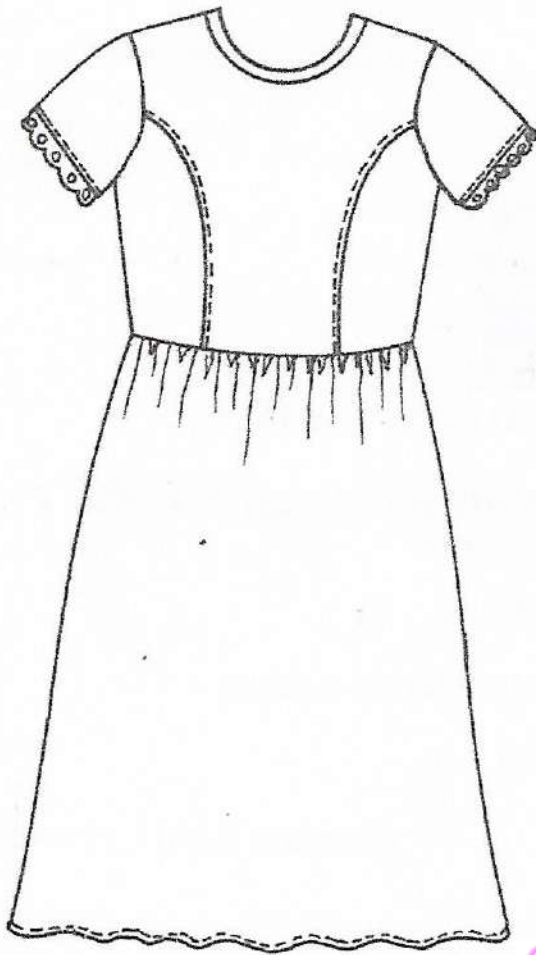
NB: Spend minimal time on pattern preparation.

2. Using the materials provided and the prepared patterns, cut out and make the garment as follows:
 - (a) Use plain open seams at shoulders, CB, sides and underarms.
 - (b) Use a crossway strip to bind the neckline.
 - (c) Work an inseam pocket on the right side seam of skirt.

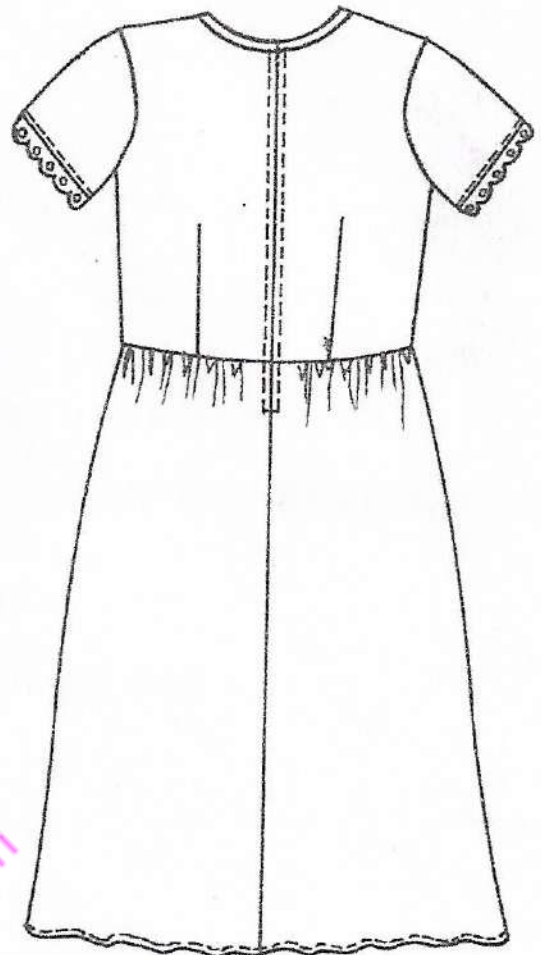
Measurements

Full length	95 cm
Sleeve length	18 cm
Pocket mouth width	12 cm

easytvvet.com



FRONT VIEW



BACK VIEW

THIS IS THE LAST PRINTED PAGE.