

1801/203
GARMENT MAKING PRACTICAL
(FOR WOMEN)
June/July 2021
Time: 7 hours



THE KENYA NATIONAL EXAMINATIONS COUNCIL
CRAFT CERTIFICATE IN FASHION DESIGN AND
GARMENT MAKING TECHNOLOGY

MODULE II

GARMENT MAKING PRACTICAL (FOR WOMEN)

7 hours

INSTRUCTIONS TO CANDIDATES

1. You should have the following items for this examination:

- (i) easy fitting bodice and sleeve blocks size 8 in full scale;
- (ii) light weight cotton fabric 2 metres long by 114 cm wide;
- (iii) sewing thread to match the fabric;
- (iv) fusible interfacing 40 cm by 15 cm;
- (v) brown papers;
- (vi) one button 1.5 cm diameter without a shank;
- (vii) tracing wheel;
- (viii) glue / sellotape;
- (ix) a pair of paper cutting scissors;
- (x) HB / 2H pencils;
- (xi) 1 metre ruler / square;
- (xii) sewing tools;
- (xiii) one large envelope.

2. At the end of this examination:

- (a) stitch on a label bearing your name and index number on a single layer of fabric without concealing any details;
- (b) enclose the garment in the large envelope provided and hand it over to the examiner.

This paper consists of 3 printed pages.

Candidates should check the question paper to ascertain that all the pages are printed as indicated and that no questions are missing.

TASK

1. Using the bodice, sleeve blocks and the measurements provided, produce final patterns for the garment style sketched on page 3.

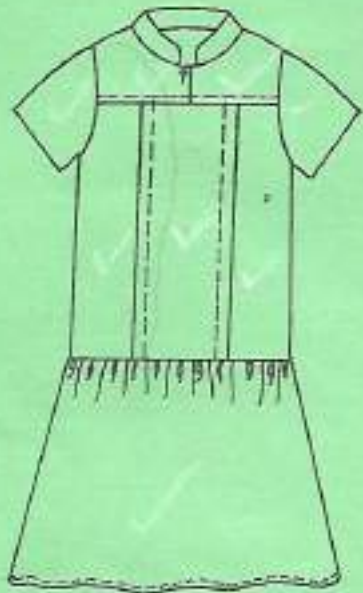
NB// Spend minimal time on preparation of patterns.

2. Using the prepared patterns and the fabric provided, cut out and make the garment as follows:
 - (i) make plain open seams at the sides and underarms;
 - (ii) make a double back yoke and sandwich the back yoke and shoulder seams;
 - (iii) make an extended front facing;
 - (iv) slip hem the sleeves;
 - (v) make the buttonhole and attach the button.

MEASUREMENTS

Full length	-	90 cm
Sleeve length	-	20 cm
Sleeve width	-	33 cm
Collar width	-	3 cm
Tuck width	-	2.5 cm
Front yoke depth	-	14 cm
Back yoke depth	-	12 cm
Skirt / frill length	-	35 cm

easytvet.com



FRONT VIEW



BACK VIEW

THIS IS THE LAST PRINTED PAGE.