

1801/202

**GARMENT CUTTING AND MAKING THEORY  
AND PATTERN DRAFTING II AND GRADING**

Oct./ Nov. 2021

Time: 4 Hours



**THE KENYA NATIONAL EXAMINATIONS COUNCIL**

**CRAFT CERTIFICATE IN FASHION DESIGN AND GARMENT MAKING  
TECHNOLOGY**

**MODULE II**

**GARMENT CUTTING AND MAKING THEORY  
AND PATTERN DRAFTING II AND GRADING**

**4 hours**

**INSTRUCTIONS TO CANDIDATES**

*You should have the following items for this examination:*

<i>white plain A4 paper;</i>	<i><math>\frac{1}{4}</math> scale ruler / square;</i>
<i>French curves;</i>	<i>sellotape/ glue</i>
<i>30 cm ruler;</i>	<i>tracing wheel / a pair of compasses;</i>
<i>2 H/ HB pencils;</i>	<i>a pair of paper cutting scissors;</i>
<i>pencil sharpener;</i>	<i>set square;</i>
<i>paper pins;</i>	<i>eraser.</i>
<i>tracing paper.</i>	

*This paper consists of **THREE** sections; A, B and C.*

*Answer **ONE** question in section A and **ONE** question in section B in the answer booklet provided.*

*Attempt **ALL** the questions in section C.*

*Candidates should answer the questions in English.*

**This paper consists of 6 printed pages.**

**Candidates should check the question paper to ascertain that all the pages are printed as indicated and that no questions are missing.**

**SECTION A: GARMENT CUTTING THEORY (20 marks)**

*Answer only ONE question from this section.*

1. (a) Outline **four** functions of special equipment in a cutting room. (4 marks)
- (b) Identify **six** pattern pieces for a jacket. (3 marks)
- (c) Outline **three** objectives of bundling cut work. (3 marks)
- (d) Explain **three** fabric characteristics which should be considered in a spreading process. (6 marks)
- (e) Highlight **four** instructions necessary in final patterns. (4 marks)
2. (a) Outline **four** benefits of working in a clean workshop. (4 marks)
- (b) Explain **three** shortcomings of a band knife. (6 marks)
- (c) (i) Explain **two** advantages of a stepped lay. (4 marks)
- (ii) Explain **two** objectives of securing a spread. (4 marks)
- (d) Outline **two** advantages of ticketing cut work. (2 marks)

**SECTION B: GARMENT MAKING THEORY (20 marks)**

*Answer only ONE question from this section.*

3. (a) Identify **eight** tools used in garment construction. (4 marks)
- (b) Explain **three** aims of inspecting garments during construction. (6 marks)
- (c) Describe **three** ways of ensuring safety of operators in a workshop. (6 marks)
- (d) Explain **two** aims of binding garment parts. (4 marks)
4. (a) (i) Highlight **four** advantages of sewing as a seam formation method. (4 marks)
- (ii) Identify **two** methods of seam formation other than sewing. (2 marks)
- (b) Outline the procedure for preparing and fixing a patch pocket with a flap. (14 marks)

**SECTION C: PATTERN DRAFTING II AND GRADING (60 marks)**

*Answer ALL the questions in this section.*

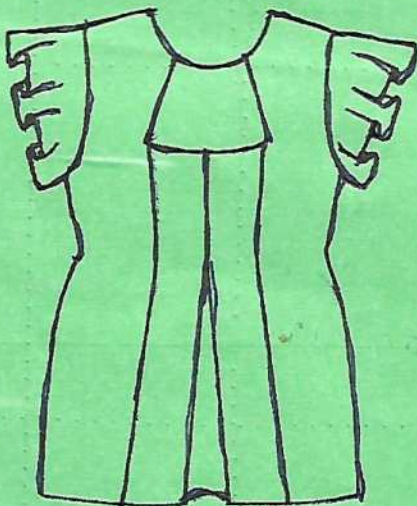
**TASKS:**

5. Using the bodice blocks, sleeve block and the measurements provided, produce final patterns for the garment style sketched below.

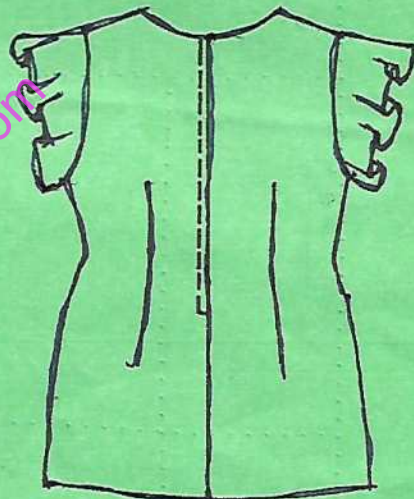
**N.B: Omit hem and seam allowances.**

**Measurements:**

Full length	-	56 cm
Sleeve length	-	22 cm
Yoke depth	-	10 cm
Pleat depth	-	3 cm



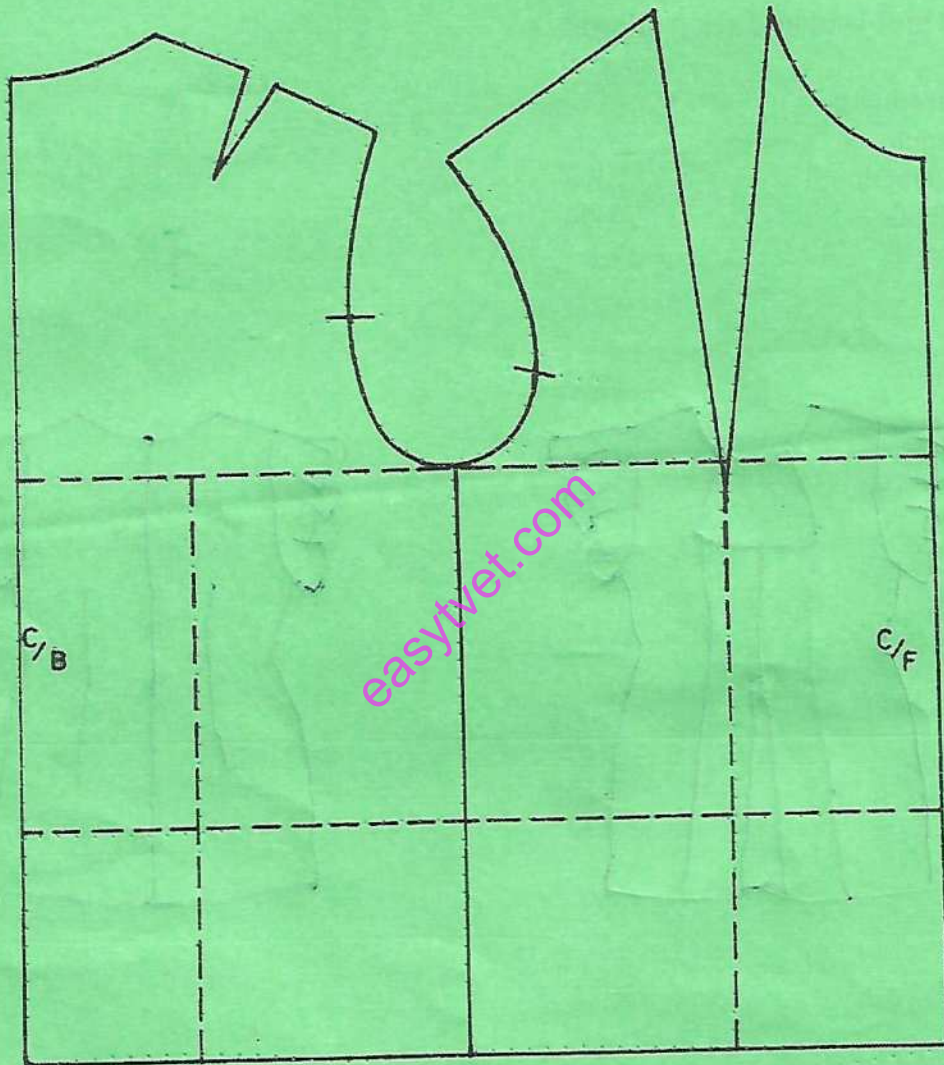
FRONT VIEW



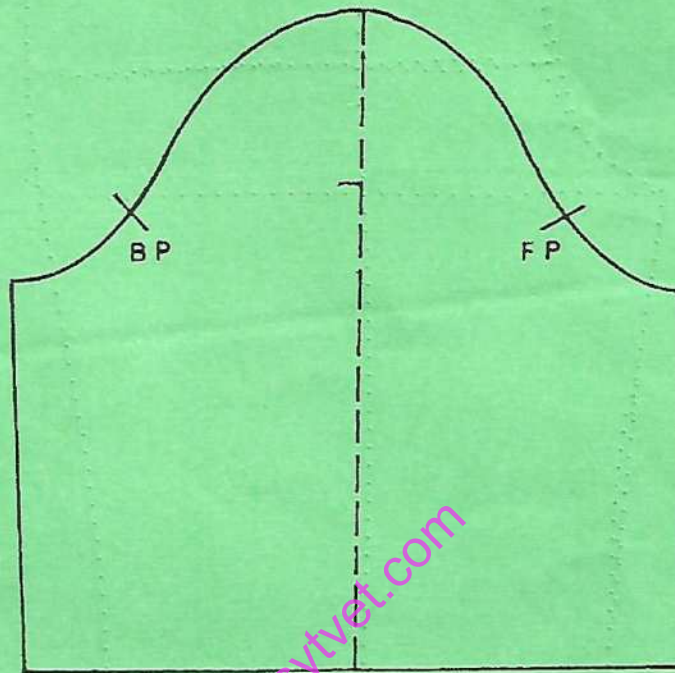
BACK VIEW

6. Trace out the men's basic trouser block size 102 provided on page 6 and grade it one size down.

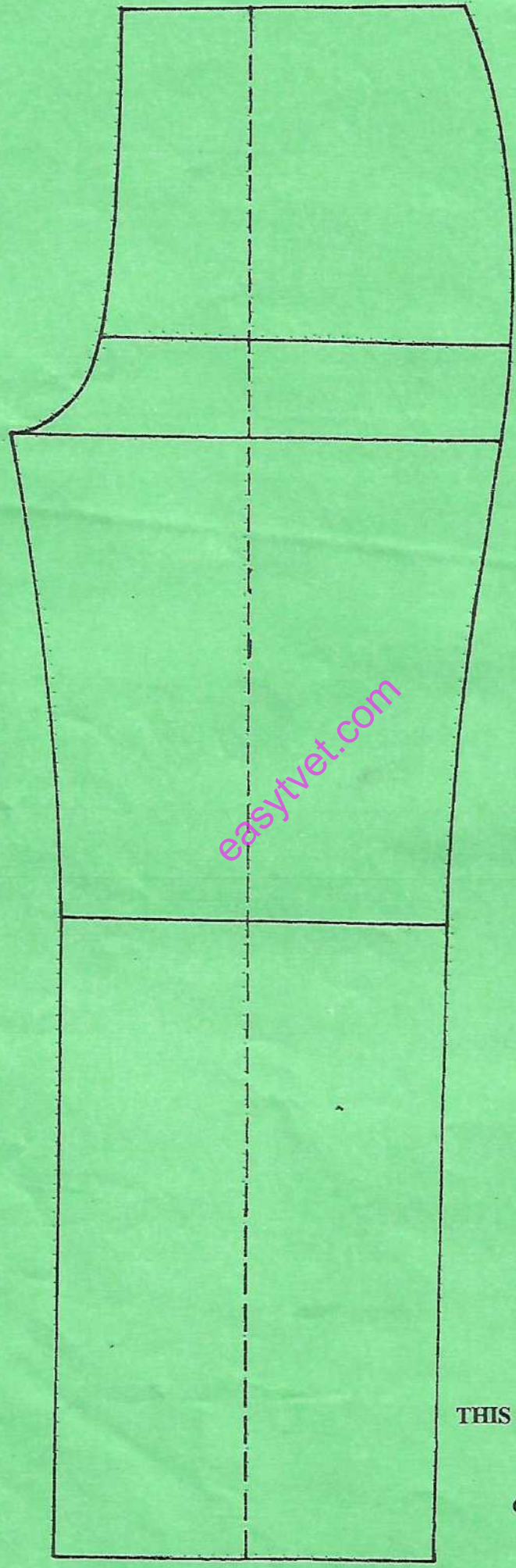
# BODICE BLOCKS



# SLEEVE BLOCK



TROUSER BLOCK



**THIS IS THE LAST PRINTED PAGE.**