

**073203T4PLM**

**PLUMBING LEVEL 3**

**CON/OS/PL/CR/01/3/**

**Install Pipes in Buildings**

**July/August 2025**



**TVET CURRICULUM DEVELOPMENT, ASSESSMENT AND CERTIFICATION  
COUNCIL (TVET CDACC)**

**PRACTICAL ASSESSMENT**

**Time: 8 HOURS**

**INSTRUCTIONS TO CANDIDATE:**

- A. In this assessment, you are required to perform the following tasks
- i.** Measure, cut and thread pipes as per requirements of the job
  - ii.** Install the pipes and fittings as per diagram .
  - iii.** Test the functionality of the pipe work.
- B. You have been provided with the following resources for the practical tasks
- Do not dismantle your project after completion and marking.

***This paper consists of THREE (3) printed pages  
Candidates should check the question paper to ascertain that all pages are printed as  
indicated and that no questions are missing***

You are provided with the following resources for the task.

<b>Piping tools/ equipment and personal protective equipment</b>	<b>Materials</b>
<ul style="list-style-type: none"> <li>• Pipe threading equipment (die stock)</li> </ul>	<ul style="list-style-type: none"> <li>• PPR 1/2'' male adapter (1 No.)</li> </ul>
<ul style="list-style-type: none"> <li>• Pipe wrench</li> </ul>	<ul style="list-style-type: none"> <li>• G.I 1/2'' Tee (inch) (2No.)</li> </ul>
<ul style="list-style-type: none"> <li>• Hacksaw</li> </ul>	<ul style="list-style-type: none"> <li>• G.I 3/4'' (inch) elbow (2 No.)</li> </ul>
<ul style="list-style-type: none"> <li>• Pipe vice</li> </ul>	<ul style="list-style-type: none"> <li>• PPR 3/4'' (inch) male adapter</li> </ul>
<ul style="list-style-type: none"> <li>• Files</li> </ul>	<ul style="list-style-type: none"> <li>• PPR 3/4'' (inch) Elbow</li> </ul>
<ul style="list-style-type: none"> <li>• Hand gloves</li> </ul>	<ul style="list-style-type: none"> <li>• Gate valve 3/4''(inch)</li> </ul>
<ul style="list-style-type: none"> <li>• Dust coat/overall</li> </ul>	<ul style="list-style-type: none"> <li>• G.I Pipe 1/2'' (inch) (700mm)</li> </ul>
<ul style="list-style-type: none"> <li>• Safety boots</li> </ul>	<ul style="list-style-type: none"> <li>• G.I Pipe 3/4''(inch) (1450mm)</li> </ul>
<ul style="list-style-type: none"> <li>• Tape measure</li> </ul>	<ul style="list-style-type: none"> <li>• PPR pipes 3/4''(inch) (1300mm)</li> </ul>
<ul style="list-style-type: none"> <li>• Steel rule</li> </ul>	<ul style="list-style-type: none"> <li>• Reducing bush- 3/4'' (inch) x 1/2'' (inch)</li> </ul>

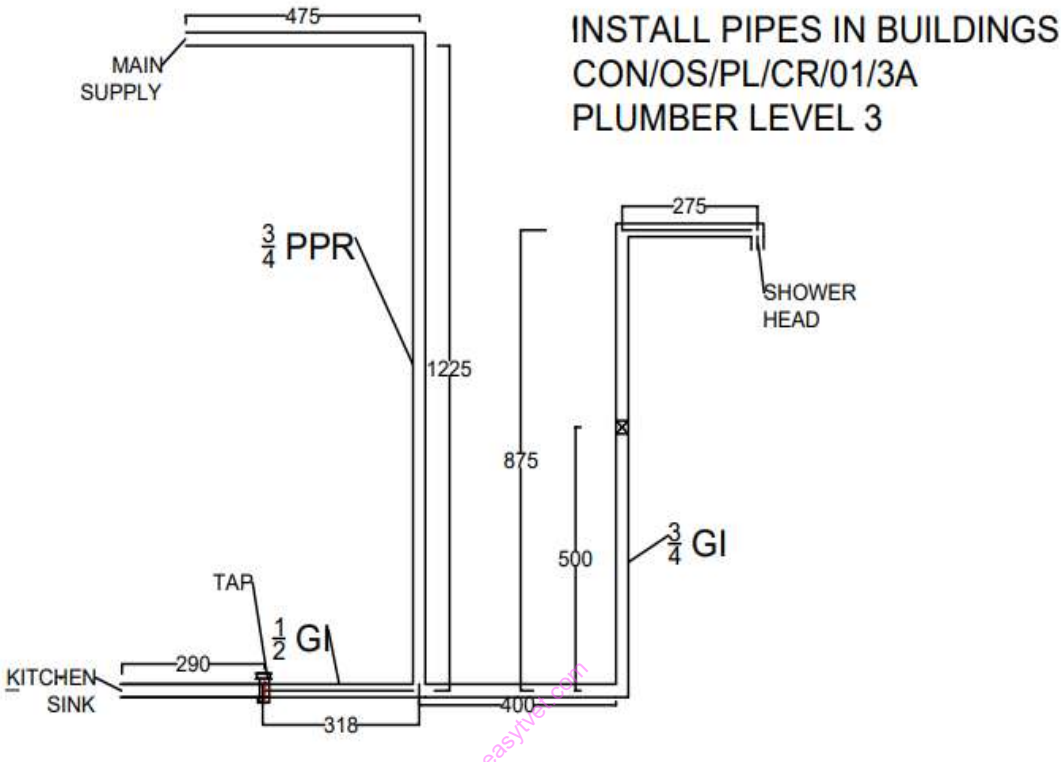


Figure 1

**THIS IS THE LAST PRINTED PAGE**