

073206T4CEN

CIVIL ENGINEERING LEVEL 6

CON/CO/CET/CR/06/6/A

Produce Building Drawings

July/Aug 2025



**TVET CURRICULUM DEVELOPMENT, ASSESSMENT AND CERTIFICATION
COUNCIL (TVET CDACC)**

PRACTICAL ASSESSMENT

INSTRUCTIONS TO THE ASSESSOR

1. Assess the candidate as the practical progresses observing the critical areas
2. You are required to mark the practical as the candidate perform the tasks
3. You are required to take video clips at critical points
4. Ensure the candidate has a name tag and registration code at the back and front

OBSERVATION CHECKLIST

Candidate's Name & Registration Code			
Assessor's Name & Registration Code			
Venue of Assessment			
Date of Assessment			
Items to be Evaluated: <i>Please award marks as appropriate. Give a brief comment on your observation.</i>	Marks Available	Marks Obtained	Comments
TASK 1:			
PLAN			
1. Produce layout plan as per the drawing <i>(Award 5 marks for correct floor plan or zero)</i>	5		
2. Used appropriate scale 1:100 <i>(Award 2 marks or zero)</i>	2		
3. Dimensions			
• Plinth area 10036 x 7491 <i>(Award 2marks for correct dimensions or zero)</i>	2		
• verandah 964 x 2290 <i>(Award 1 mark for correct dimensions or zero)</i>	1		
• Lounge room 3611 x 3921 <i>(Award 2 marks for correct dimensions or zero)</i>	2		
• Bedroom 1 2000 x 2600 <i>(Award 2 marks for correct dimensions or zero)</i>	2		
• Master Bedroom 3525 x 3801 <i>(Award 2 marks for correct dimensions or zero)</i>	2		
• Bedroom 2 2425 x 3000	2		

(Award 2 marks for correct dimensions or zero) • Kitchen 2447 x 2290	2		
(Award 2 marks for correct dimensions or zero) • Corridor 2000 x 3500	2		
(Award 2 marks for correct dimensions or zero) • Bathroom 901 x 1840	2		
(Award 2 marks for correct dimensions or zero) • Toilet 899 x 1840	2		
(Award 2 marks for correct dimensions or zero) 4. Included	2		
• Doors	2		
(Award 2 marks or zero) • Windows	3		
(Award 2 marks or zero) • Sanitary fittings	2		
(Award 3 marks or zero) • Dimension	3		
(Award 2 marks or zero) • Roof	3		
(Award 3 marks or zero)			
Elevation			
• West elevation (Award 2 marks or zero)	2		
• East elevation (Award 2 marks or zero)	2		
• North elevation (Award 2 marks or zero)	2		
• South elevation (Award 2 marks or zero)	2		
Sub-Total 1	44		

TASK 2:			
1. Rendered surfaces • East Elevation (<i>Award 5 marks or zero</i>) • West Elevation (<i>Award 5 marks or zero</i>)	5 5		
2. Generated 3 D generic Axonometric (<i>Award 4 marks or zero</i>)	4		
3. Saved the drawing on the CD (<i>Award 2 marks or zero</i>)	2		
Sub-Total 2	16		
GRAND TOTAL	60		
ASSESSMENT OUTCOME			
The candidate was found to be: <div style="display: flex; justify-content: space-around; align-items: center;"> Competent <input style="width: 40px; height: 20px; border: 1px solid black;" type="checkbox"/> Not yet Competent <input style="width: 40px; height: 20px; border: 1px solid black;" type="checkbox"/> </div> <p><i>(Please tick as appropriate)</i> <i>(The candidate is competent if the candidate obtains at least 50%)</i></p>			
Feedback from the Candidate:			
Feedback to the Candidate:			
Candidate Signature		Date:	
_____		_____	
Assessor's Signature		Date	
_____		_____	

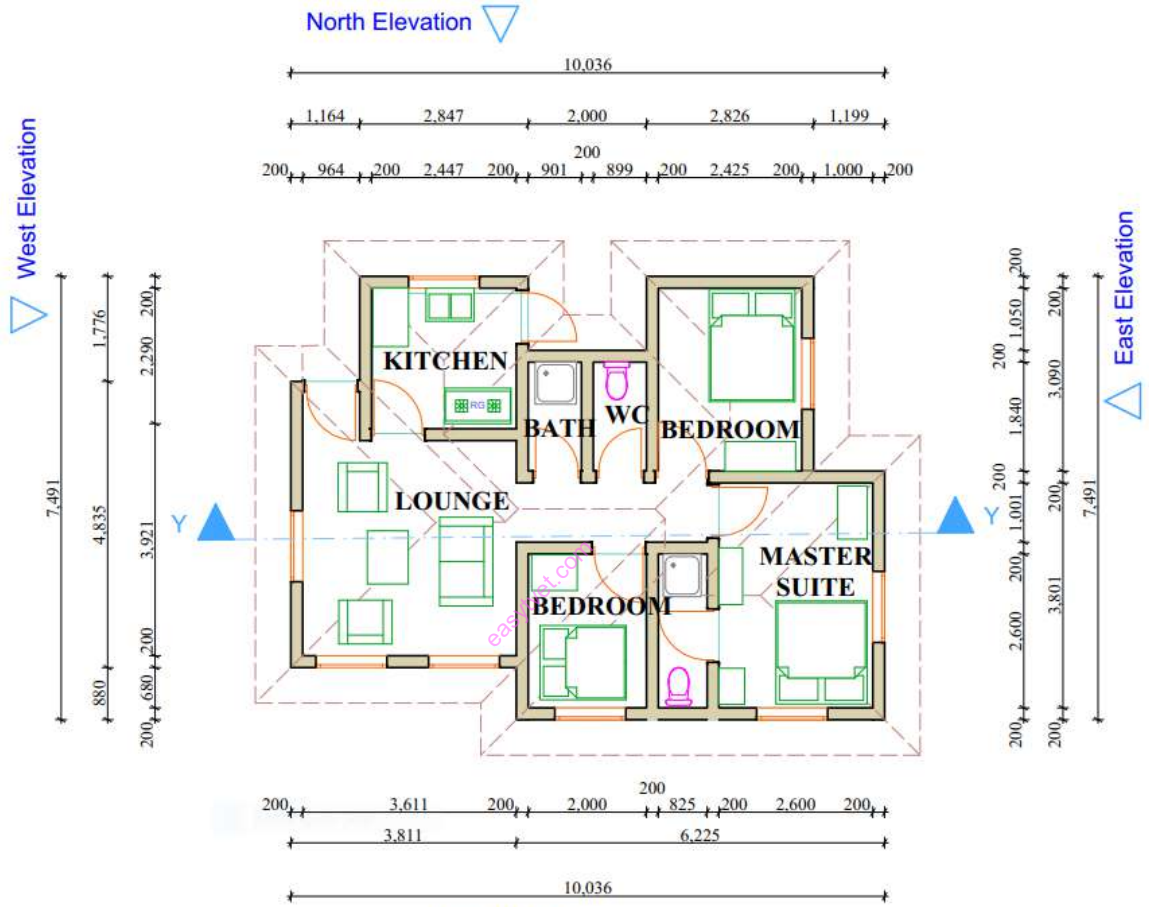
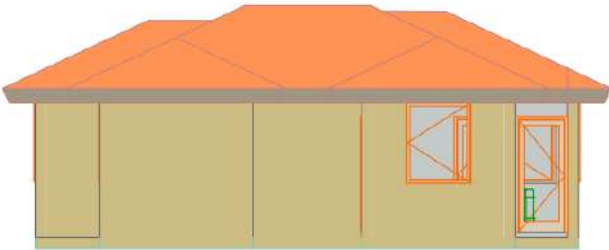
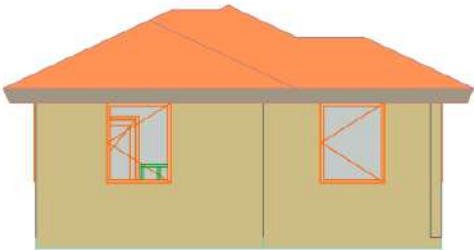


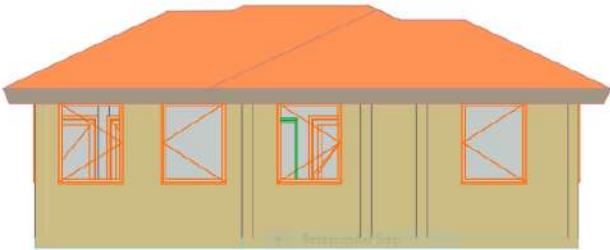
FIGURE 1



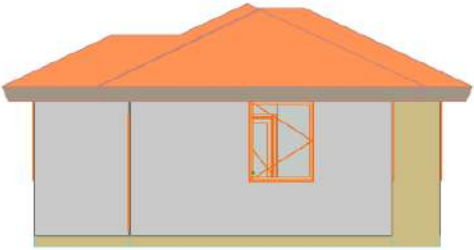
N. E.



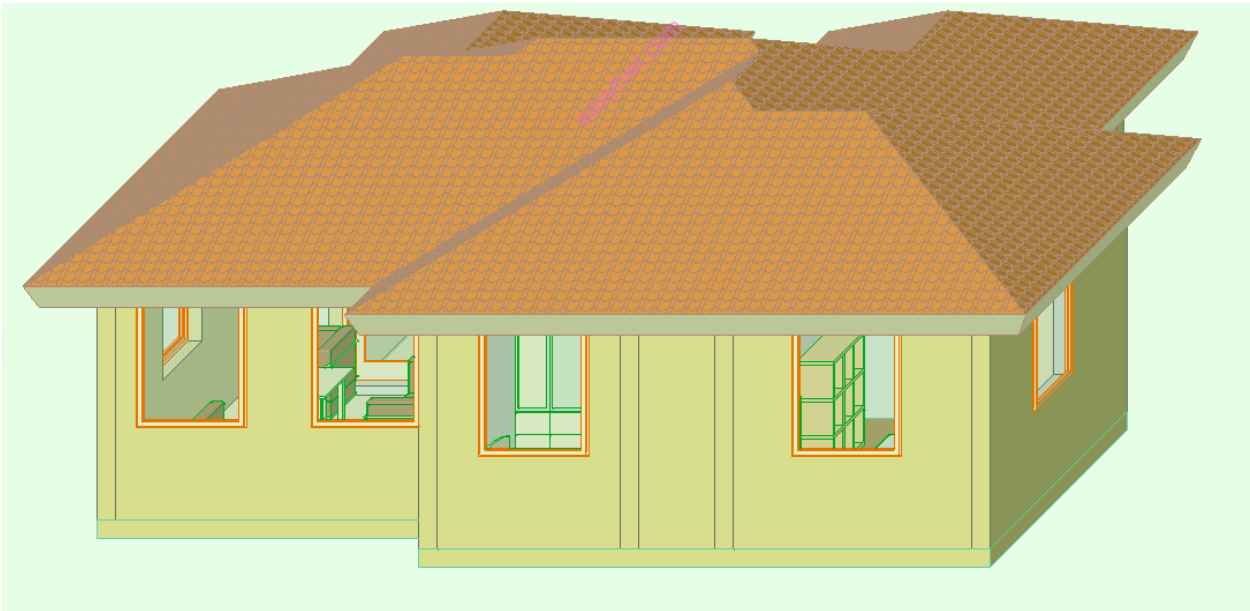
E. E



S. E



W.E



GENERIC AXONOMETRY